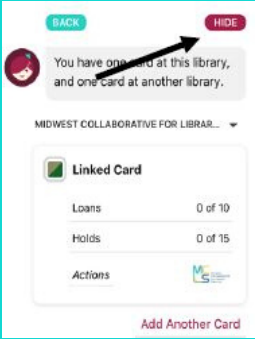


11. Touch “Next”

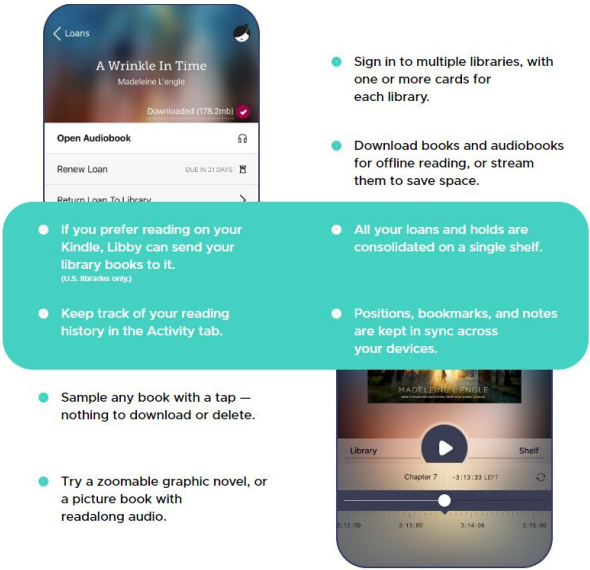
12. Touch “Hide”



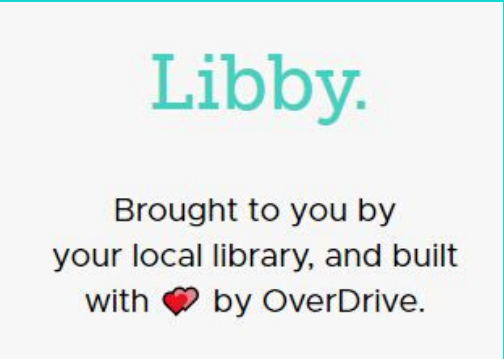
13. You are ready to begin searching the eBook & eAudiobook catalog of our partner cooperative Midwest Collaborative

14. Borrow a title or place one on hold today

15. To add our newest partnering Cooperative, repeat steps 1-14 and at step 3 search for Suburban



An app to borrow all your favorite eBooks & eAudiobooks from Henika District Library through the Lakeland Library Cooperative



149 South Main St Wayland,
MI 49348 Phone: 269-792-2891
Fax: 269-792-0399

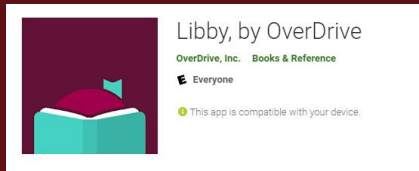
...
AND NOW our partners
Midwest Collaborative and
Suburban Library Cooperative

Getting Started:

1. Install the Libby app from your device's app store.



2. Open the app and find Lakeland Library Cooperative (LLC). You can search by library, city, or zip code.



3. Browse your LLC's collection and borrow a title. When prompted, sign in. You will need a valid library card to complete this step.

4. Borrowed titles appear on your SHELF and download to the app automatically so you can read them when you are offline.

5. From your SHELF you can: Tap START READING or START LISTENING to open a title.

6. To send a book to Kindle, Tap the cover image, then SEND TO DEVICE

For even more access:

Visit our partner **Midwest Collaborative for Library Services and Suburban Library Cooperative.**

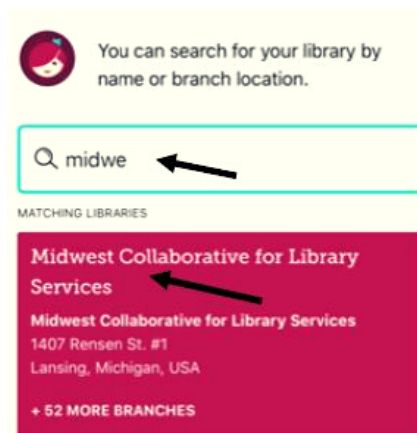
1. Touch the Libby icon in the upper right hand corner of your screen



2. Touch "Add a Library"

3. Type Midwest Collaborative

4. Touch when it appears on your screen



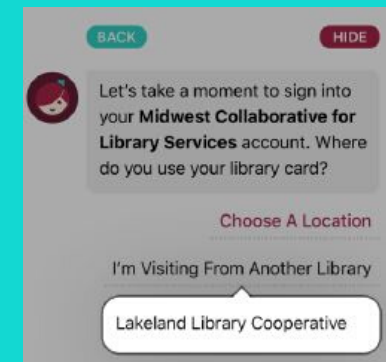
5. Touch the Libby icon in the upper right hand corner of the screen

6. Touch "See Library Cards"

7. Touch "Add a Card"

8. Touch "I'm Visiting From Another Library"

9. Touch "Lakeland Library Cooperative"



10. Enter your Henika library card number 2134000XXXXXX and Touch "Sign In"